

# Your transformation to the cloud - CB interface discovery takes care of connectivity

Achim Westermann  
Vice President Interface Management

Arne Tornieporth  
Product Manager CrystalBridge Cloud Suite

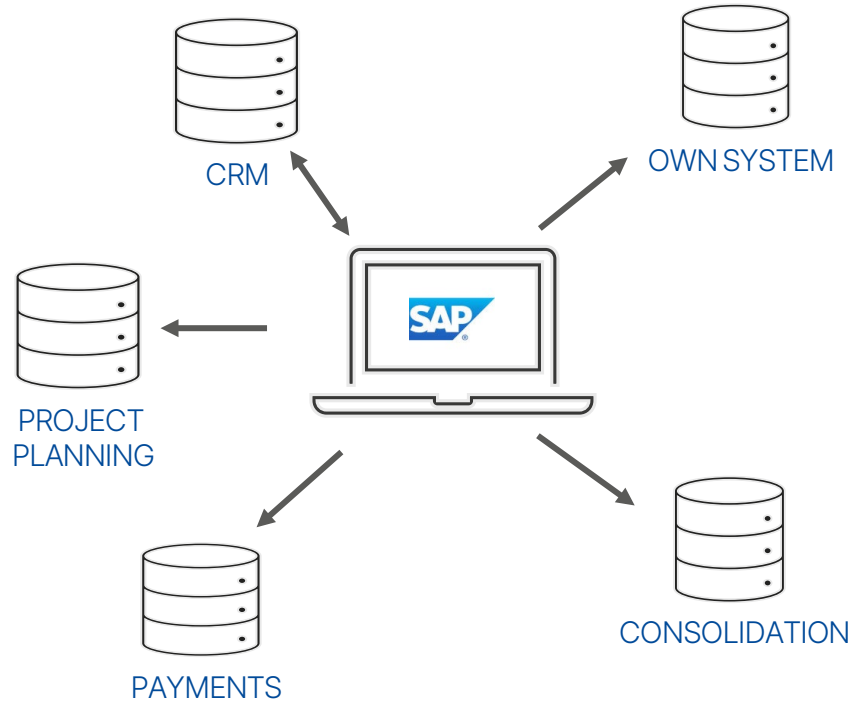


DATA. TRANSFORMATION. EXPERIENCE.

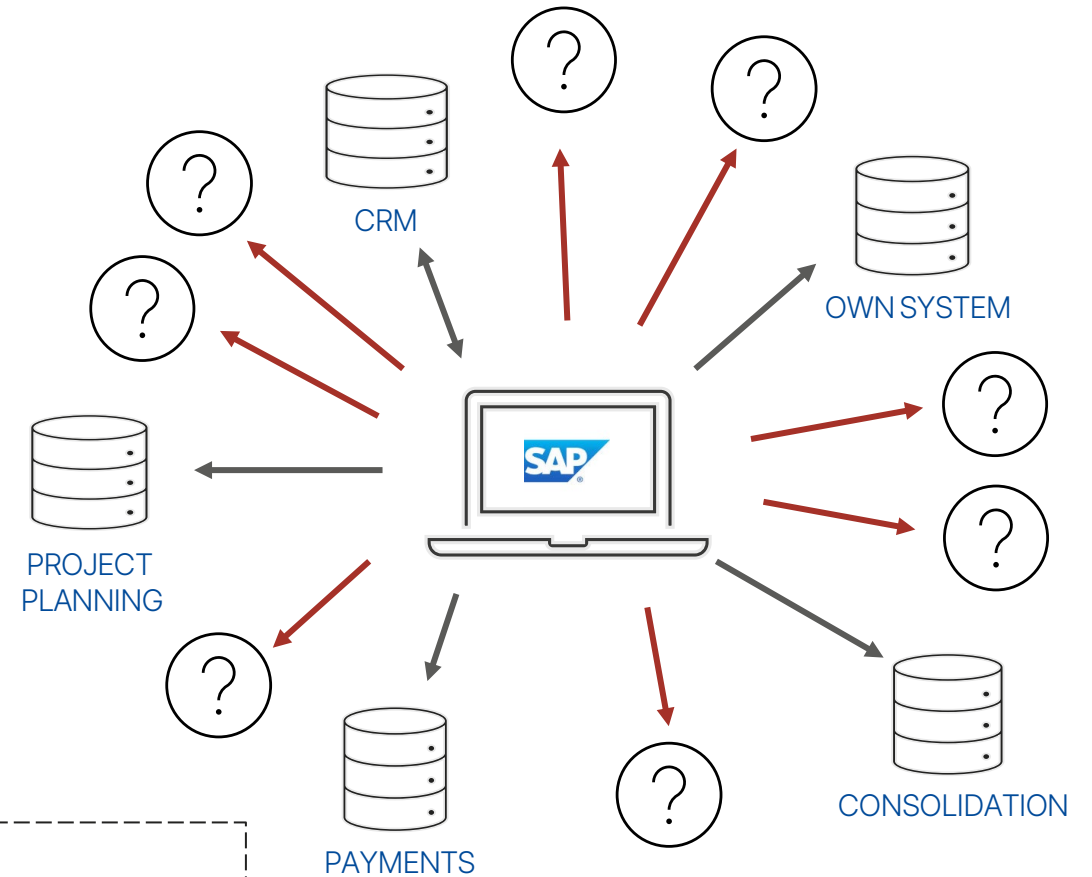


# Interface Topologies are often more complex than expected

## CIO System Landscape View



## Actual SAP Universe



- Historically grown landscapes
- Undocumented or unknown interfaces / systems
- Unused interfaces are not de-commissioned
- Knowledge about interfaces is lost through fluctuation

# DO YOU KNOW ALL YOUR INTERFACES?

**„We don't know what we  
don't know“**  
[Customer statement after ID Assessment]



# Challenges

## PROJECT SITUATION

An IT change project or transformation project is planned or has already started (e.g. **Cloud Move**)?

Existing interface documentation is incomplete, outdated or potential gaps are unknown?

A „rapid“ interface analysis shall be made to safeguard a transformation project?

## DAILY BUSINESS

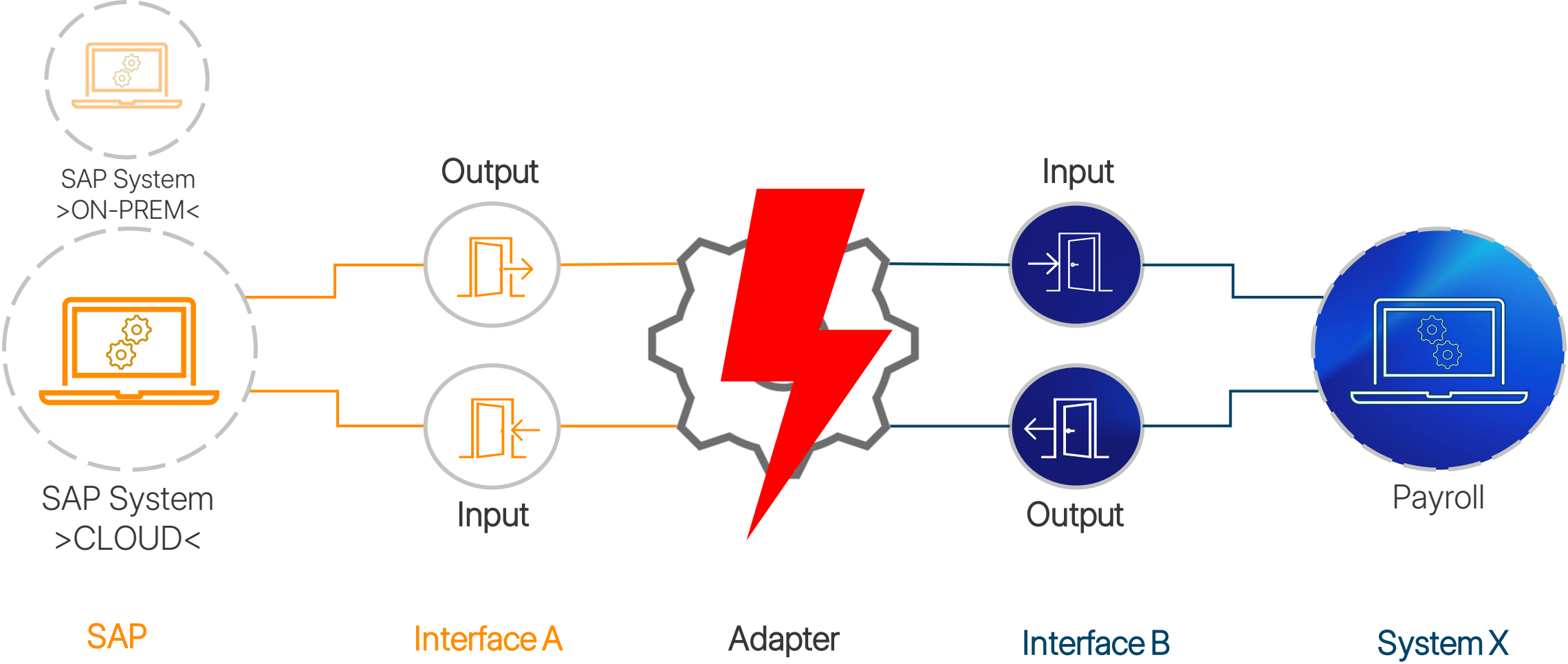
Are inventory and documentation of interfaces as well as continuous updates tasks of your IT?

You have undocumented interfaces although change management processes are in place?

You struggle to fulfill Audit requirements?

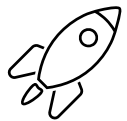
Interface Management doesn't really create enthusiasm, because you suspect what awaits you: recurring, time-consuming manual analysis?

# Are Interfaces important?



# Interfaces are important!

What can happen in **Projects** if you don't know your interfaces?



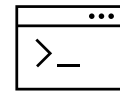
## Reschedule Golive

Acceptance test failed  
→ Golive delayed or  
rescheduling required



## Post-Golive Problems

No option to continue  
with old system



## New Implementation

Adaption resp. new  
implementation needs  
lead time!



## High Cost

Rescheduling of Golive  
or failures after Golive  
can get quite expensive

# Basic Idea: Generate Topology Map based on Traffic

## Traffic Systems



Railroad → Train, Tram, ..



Road → Car, Truck, Bike, ..



Air → Plane, Heli, ..

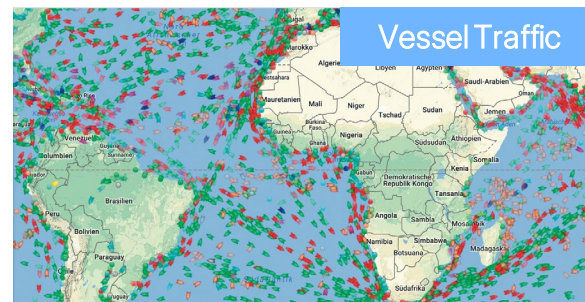
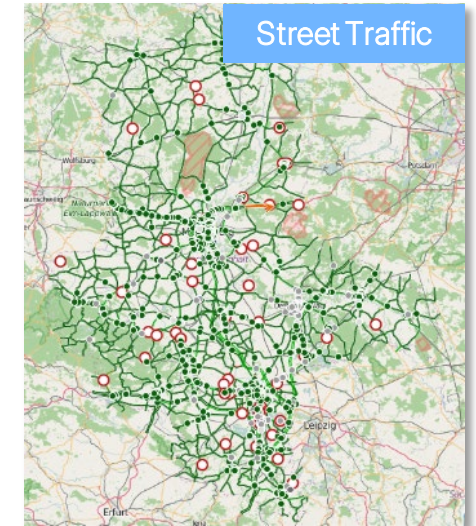
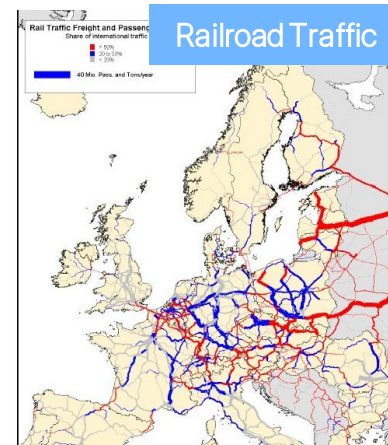


Water → Vessels, Boats, ..

Traffic



## Traffic Visualization via Topologies

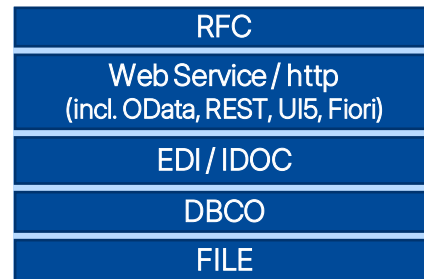


# ID Context: Generate Topology Map based on Traffic

Systems



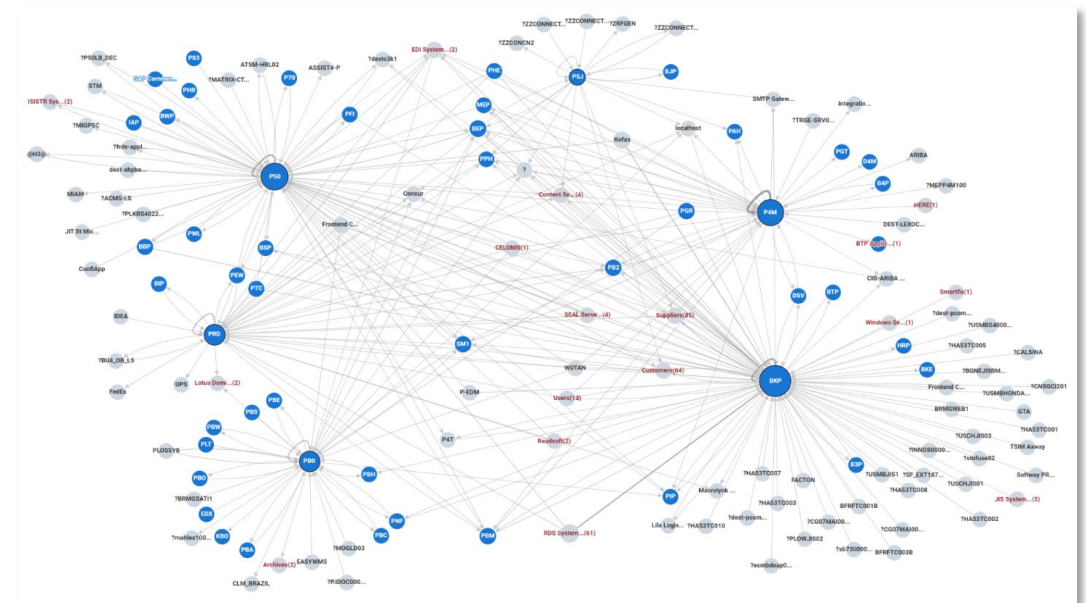
Protocols / Channels



Traffic Collection



Communication Topology

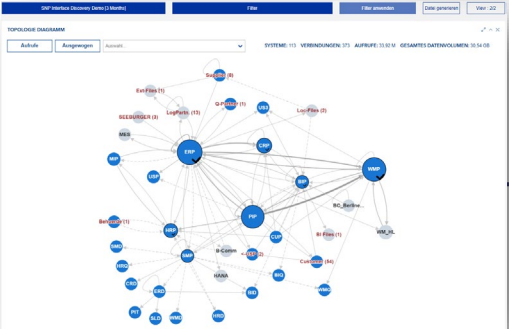
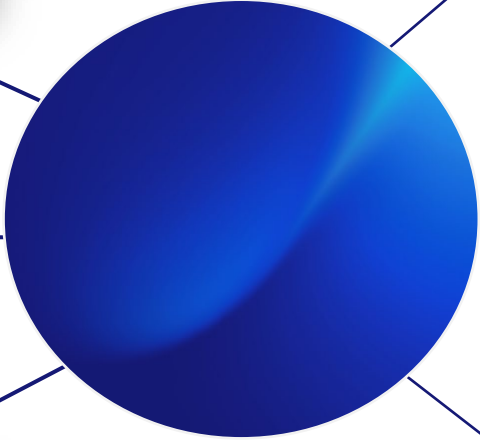
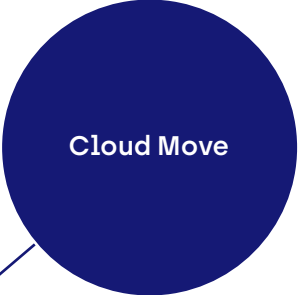
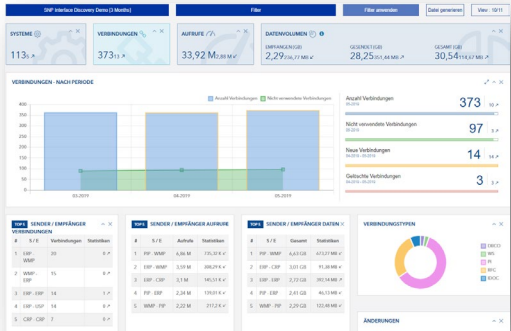


- Always up-to-date overview for SAP landscapes of **any** size
- Time savings due to significant reduction of manual effort
- Easy analysis of communication paths and data streams - system-specific or cross-system
- Extensible via Customer API



# Interface Discovery

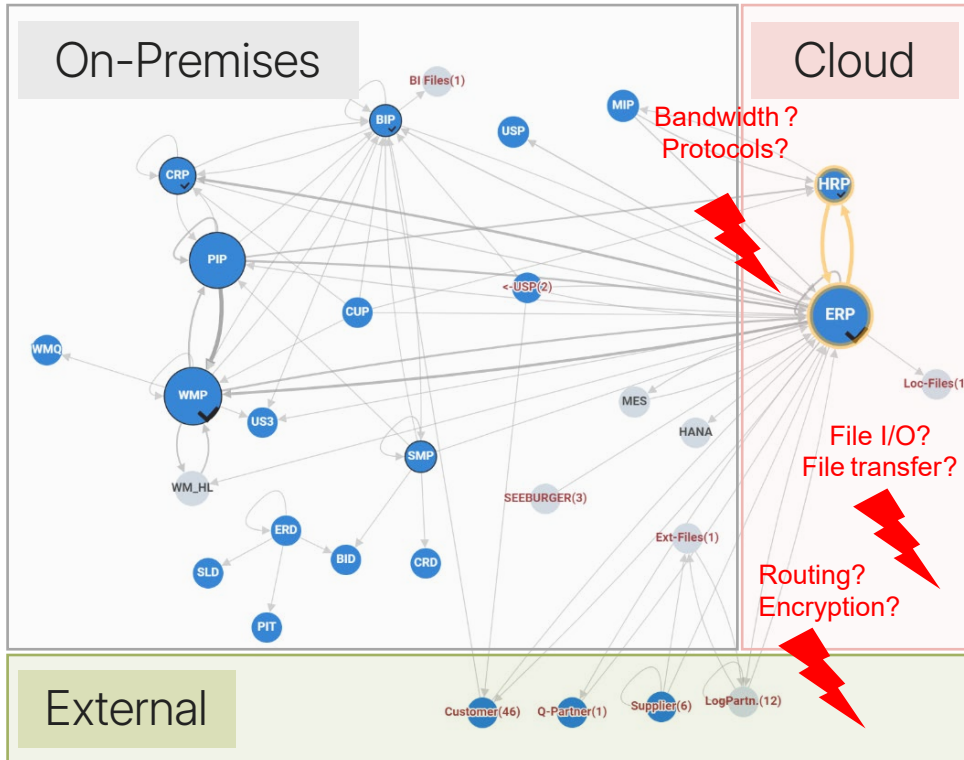
## Relevant and beneficial for all Project Types



INTERFACES

Portid	Connection type	Sender	Sender interface	Receiver	Receiver interface	Calls	Destination	Connection outtype	DDP type	Sender addr	
201905	DDP	HSP	ASCT_ACT_ALLOC	ESP	ASCT_ACT_ALLOC	1	LS	LS	ASCT_ACT_ALLOC		
201905	DDP	HSP	ASCT_EMPLOYEE_DSP	ESP	ASCT_EMPLOYEE_DSP	2	LS	LS	ASCT_EMPLOYEE_DSP		
201905	DDP	HSP	ASCT_EMPLOYEE_DSP	ESP	ASCT_EMPLOYEE_DSP	2	LS	LS	ASCT_EMPLOYEE_DSP		
201905	DDP	HSP	ASCT_EMPLOYEE_REC	ESP	ASCT_EMPLOYEE_REC	2	LS	LS	ASCT_EMPLOYEE_REC		
201905	DDP	CUP	COLONE	ESP	COLONE	1	LS	LS	COLONE		
201905	DDP	ESP	COBMA3	HSP	COBMA3	2	LS	LS	COBMA3		
201905	DDP	ESP	OLMAST	HSP	OLMAST	37	LS	LS	OLMAST		
201905	DDP	HSP	HRRMLA	ESP	HRRMLA	114	LS	LS	HRRMLA		
201905	DDP	CUP	USERCOLONE	ESP	USERCOLONE	1802	LS	LS	USERCOLONE		
201905	DDP	CUP	USERCOLONE	HSP	USERCOLONE	6100	LS	LS	USERCOLONE		
						TOTAL: 1.022.823					

# Interface Analysis – Use Case „Cloud Move“



## Scenarios

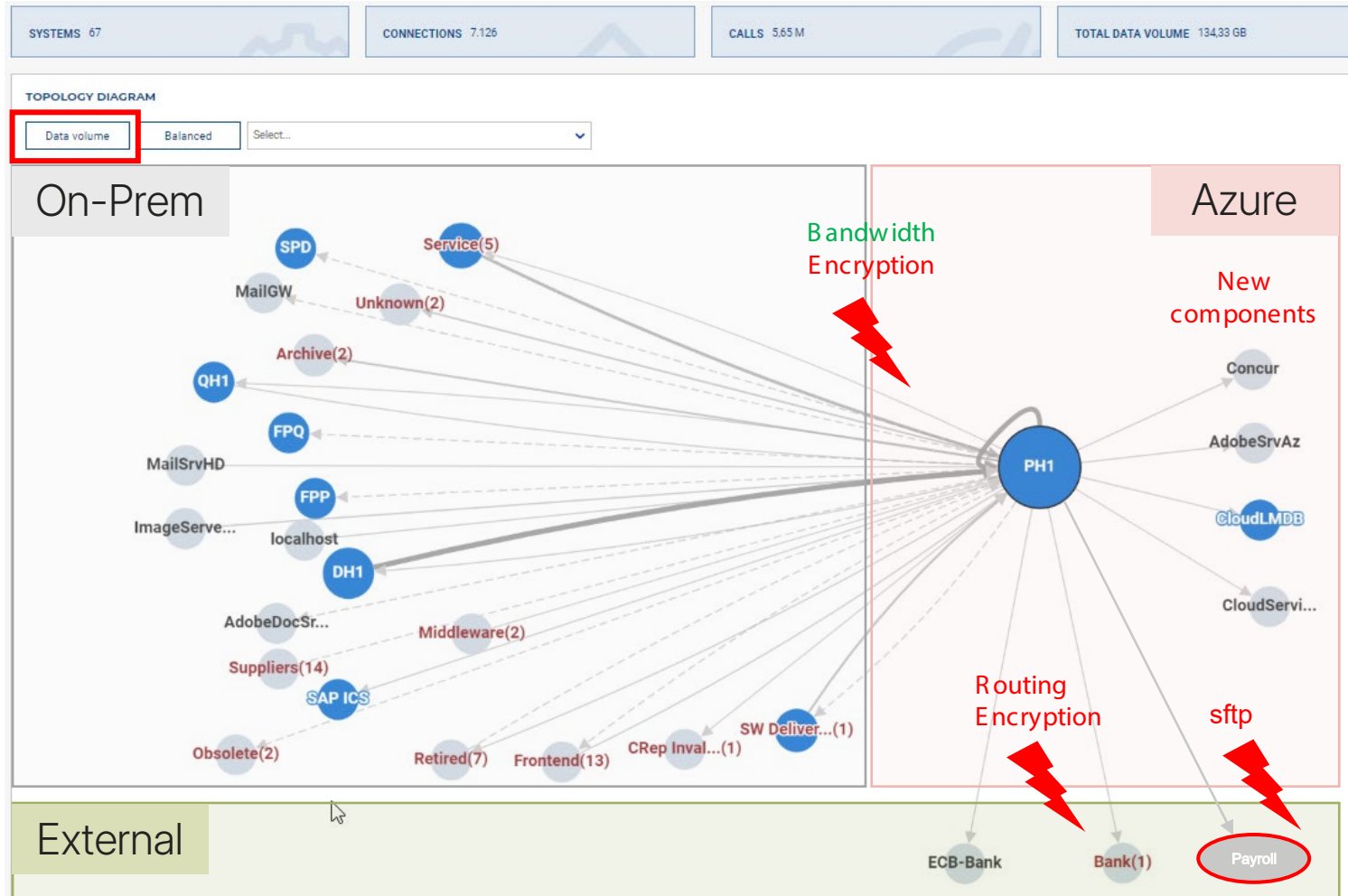
1. One or many SAP System(s) move to the cloud including / excluding environmental systems and/or non-production landscape(s)
  - Cloud-specific limitations, flexibility and cost factors to be reviewed
2. Like (1) including any kind of business transformation, e.g. S/4 transition

## Analysis Topics

- Analyze environmental systems / communication partners (on-prem and external)
- Analyze cloud-readiness of interfaces based on customer- / cloud-specific criteria
- Analyze bandwidth and secure communication requirements
- Create checklists for configuration adaptations
- Scenario 2: Analyze interfaces directly impacted by business changes

# Examples from SNP-internal "RISE with SAP" Project

## Interface Topology (by Data Volume) – Future Cloud Projection



### Scenario

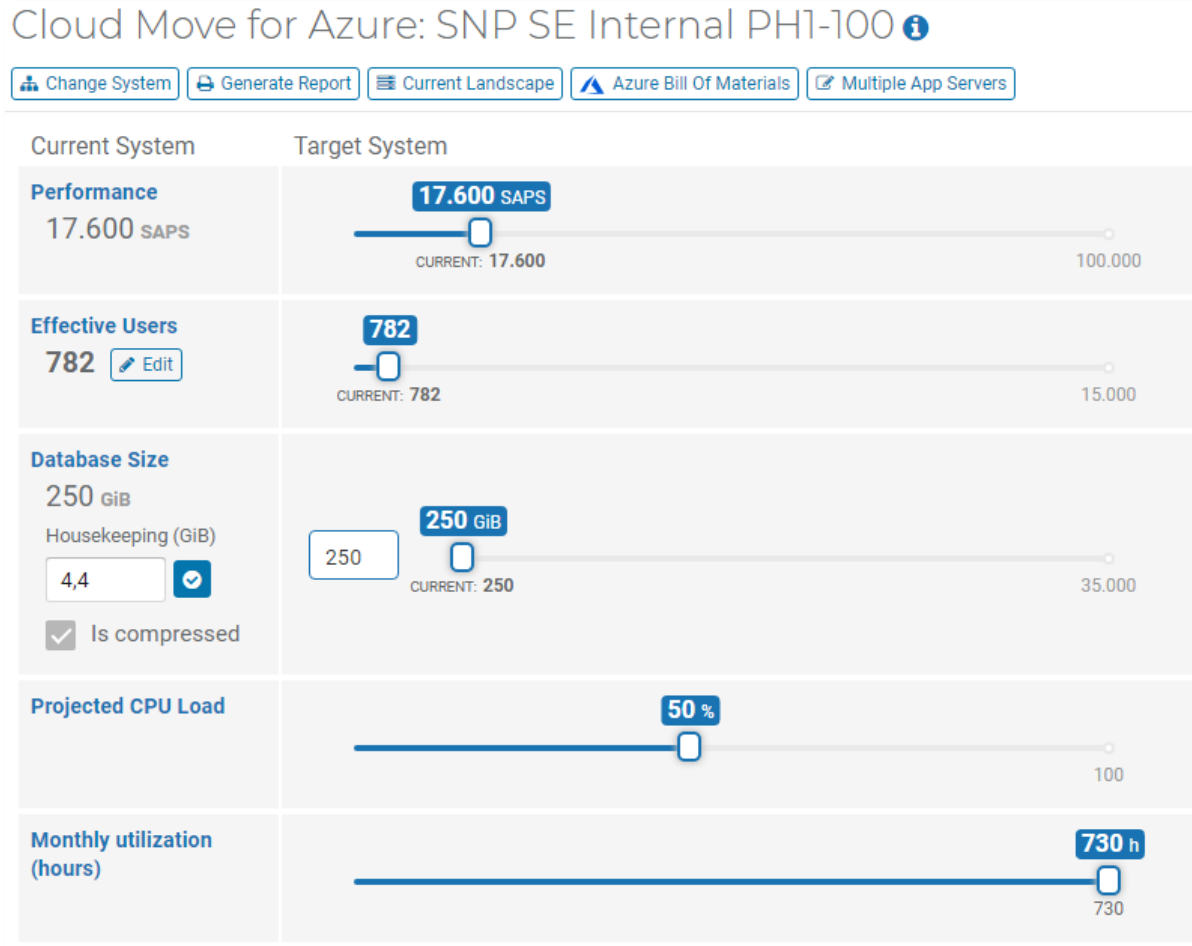
- S/4 System PH1 to be moved to Azure (operated by SAP) including Document Archive
- Cloud-specific limitations
  - In-/outbound traffic only via SNP network
  - sftp to be avoided
  - Bandwidth

### Analysis Topics (excerpt)

- Cloud readiness, especially file interfaces
- External communication partners
- Analyze bandwidth and secure communication requirements
- Checklists for configuration adaptations

# Examples from SNP-internal "RISE with SAP" Project

## Cloud Move Assessment in CrystalBridge Cloud Suite



### Prerequisites

- Analysis results (based on Analysis Extractor)

### Results (excerpt)

- Cloud Planning: deployment options, sizing, pricing
- Cloud Provisioning: create customer tenant in Azure

Recommended Landscape | Landscape comparison | Configuration | Pricing Details

Application Server	Basic	Optimal
Name	D8as v4	D16as v4
SAPS	12.088	24.175
vCPU	8	16
RAM	32 GiB	64 GiB
Disk	512 GiB	512 GiB
Three Years Reservation	418,32 \$	523,74 \$
One Year Reservation	489,76 \$	654,60 \$
Pay-As-You-Go	784,80 \$	1.065,12 \$

HANA Database Server	Basic	Optimal
Name	M32ls	M64ls
vCPU	32	64
RAM	256 GiB	512 GiB
Disk	1.792 GiB	2.560 GiB
Three Years Reservation	961,31 \$	1.573,69 \$
One Year Reservation	1.592,73 \$	2.753,02 \$
Pay-As-You-Go	2.663,40 \$	4.619,02 \$

# Examples from SNP-internal "RISE with SAP" Project

## Overview of Reports

- Analysis of different areas like
  - Content Repositories
  - RFC staging / runtime checks
  - Security aspects (e.g., https/SNC usage)
- Analysis of identified traffic
  - Quantitative figures (connections, calls, volumes)
  - Connections from/to non-SAP Systems
  - Connections from/to non-production Systems
  - Interfaces by User / Caller
- 3rd party products in use
- Cloud Readiness (technical)
  - File interfaces (including LSMW)
  - Review of In- / Outbound traffic
  - Checklists for configuration adaptations
- Interface Inventory
  - Interfaces by Protocol
  - Interfaces by User
  - Interfaces by Caller
  - Interfaces by Business Area

# Examples from SNP-internal "RISE with SAP" Project

## 3<sup>rd</sup> Party Products Usage and Impacts

USED APPLICATIONS

Search...

Namespace	Frontend	Owner	Application type	Product name	Protocol
/BCC/	<input type="checkbox"/>	All for One Poland (ex. BCC)	3rd	System Management Tools	FILE
/DVD/	<input type="checkbox"/>	Datavard AG	3rd	Datavard Tools	RFC
/LUCANET/	<input checked="" type="checkbox"/>	Lucanet	3rd	LucaNet Financial Performance Management	RFC
/SNP/	<input type="checkbox"/>	SNP Schneider-Neureither&Partner SE	3rd	SNP Products	FILE, RFC
/SNP/AF	<input type="checkbox"/>	SNP Schneider-Neureither&Partner SE	3rd	SNP Application Framework	RFC
/SNP/BB	<input type="checkbox"/>	SNP Schneider-Neureither&Partner SE	3rd	SNP System Landscape Analyse	RFC
/SNP/CC	<input type="checkbox"/>	SNP Schneider-Neureither&Partner SE	3rd	SNP Data Provisioning & Masking	RFC
/SNP/CE	<input type="checkbox"/>	SNP Schneider-Neureither&Partner SE	3rd	SNP Conversion Engine	RFC
/SNP/CN	<input type="checkbox"/>	SNP Schneider-Neureither&Partner SE	3rd	SNP Transformation Backbone	RFC
/SNP/IN	<input type="checkbox"/>	SNP Schneider-Neureither&Partner SE	3rd	SNP Internal Tools	RFC
/SNP/PX	<input type="checkbox"/>	SNP Schneider-Neureither&Partner SE	3rd	SNP Cross Product Components	RFC
/SNP/SC	<input type="checkbox"/>	SNP Schneider-Neureither&Partner SE	3rd	SNP System Scan	RFC
/SNP/TE	<input type="checkbox"/>	SNP Schneider-Neureither&Partner SE	3rd	SNP Transformation Engine	RFC
/SNP/VA	<input type="checkbox"/>	SNP Schneider-Neureither&Partner SE	3rd	SNP Interface Discovery	RFC
/SSC/	<input type="checkbox"/>	tangro software components GmbH	3rd	tangro Inbound Suite	FILE, RFC
/WUP/	<input type="checkbox"/>	Westermacher	3rd	Westermacher OM Interface (2.5x) - Exec. Sel. Set	FILE

To be decommissioned  
 New implementation  
 Frontend application → adaptations on each frontend

Upgrade of scan server and SAP backend required  
 To be decommissioned

# Examples from SNP-internal Project

## Checklist for Inbound RFC Configuration

PH1\_RFC\_Checklist\_Inbound.xlsx

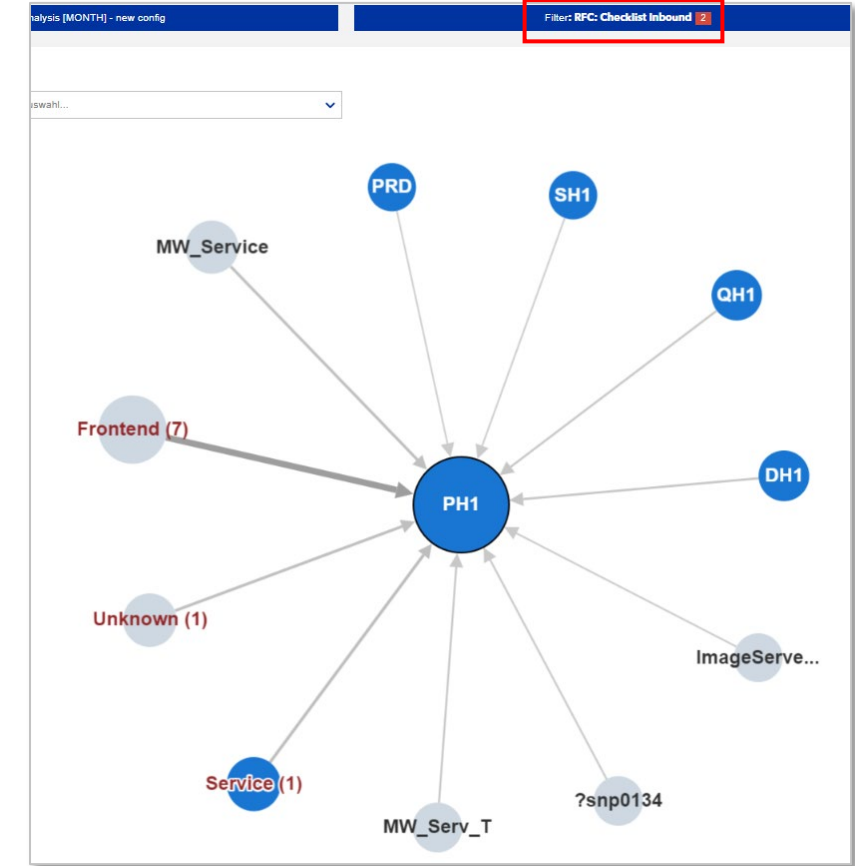
Sender	Destination	Subtype	Category	Usage	Location	Purpose
DC7	IFS_PH1_COLLECT	3	Service	Dev	Local	Tech
DH1	PH1_100	3		Dev	Local	App
DH1	SNP_TB_PH1_100	3		Dev	Local	App
DH1	PH1_100	3		Dev	Local	App
ImageServer	5ddf88e98a9da36778624208	T		Prod	Local	Tech
MW_Serv_T	{525781c5-5da4-42cd-bdf5-480a7e647819:EnvironmentEntry}25	T		Test	Local	Tech
MW_Serv_T	{2b3e42c9-ca0d-481b-8747-4134c3c5a376:EnvironmentEntry}25	T		Test	Local	Tech
MW_Serv_T	{For_SAP_Connection_Test:EnvironmentEntry}0	T		Test	Local	Tech
MW_Serv_T	{1363e2db-5bca-422f-8879-e41bcee797fa:EnvironmentEntry}37	T		Test	Local	Tech
MW_Service	{caae27d8-8468-4fc3-bf53-cafad0a6ed64:EnvironmentEntry}25	T		Prod	Local	Tech
MW_Service	{bdd16a5a-cb16-43bf-8128-d953820edcf2:EnvironmentEntry}0	T		Prod	Local	Tech
MW_Service	{2b3e42c9-ca0d-481b-8747-4134c3c5a376:EnvironmentEntry}0	T		Prod	Local	Tech
MW_Service	{59731de3-bbd1-49eb-a5cc-e412b1fd9edb:EnvironmentEntry}25	T		Prod	Local	Tech
MW_Service	{1363e2db-5bca-422f-8879-e41bcee797fa:EnvironmentEntry}0	T		Prod	Local	Tech
MW_Service	{b0ebfad0-704a-4fe1-8bec-f6c335412a95:EnvironmentEntry}0	T		Prod	Local	Tech
MW_Service	{1363e2db-5bca-422f-8879-e41bcee797fa:EnvironmentEntry}0	T		Prod	Local	Tech
MW_Service	{b0ebfad0-704a-4fe1-8bec-f6c335412a95:EnvironmentEntry}0	T		Prod	Local	Tech
MW_Service	{59731de3-bbd1-49eb-a5cc-e412b1fd9edb:EnvironmentEntry}25	T		Prod	Local	Tech
MW_Service	{caae27d8-8468-4fc3-bf53-cafad0a6ed64:EnvironmentEntry}0	T		Prod	Local	Tech
PRD	SNPPROD_PH1_100_XX	3		Prod	Local	Tech
QH1	SNP_TB_PH1_100	3		Test	Local	App
QH1	PH1_100	3		Test	Local	App
SH1	WORKFLOW_REFERENCE_100	3		Sand	Local	App
SNP002NB020	snp0130_P	T	Frontend	Prod	BUKRS 002	Frontend
SNP002NB057	PH1	3	Frontend	Prod	BUKRS 002	Frontend
snp002nb159	snp0130_P	T	Frontend	Prod	BUKRS 002	Frontend
SNP011NB294	BWL_PH1	T	Frontend	Prod	BUKRS 011	Frontend
SNP012NB011	PH1	3	Frontend	Prod	BUKRS 012	Frontend
SNP014NB004	snp0130_P	T	Frontend	Prod	BUKRS 014	Frontend

Filter variants (admin)

Private Public

Add folder Add filter variant

Name	Description
Cloud Move	Cloud Move Assessments
RFC: Checklist Outbound	
<b>RFC: Checklist Inbound</b>	



# RISE with SAP: Cloud Move to Azure

In mid-June 2022, we successfully moved our production SAP S/4HANA system to the Azure cloud as part of “RISE with SAP.”

**CrystalBridge Interface Discovery** gave us confidence that nothing was overlooked. In addition to providing a complete view of all interfaces, the automatically generated cutover checklists also helped us to work through all the relevant configuration settings and enabled smooth operation after the go-live.




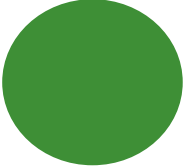
**Matthias Schirner** , Manager Global Internal SAP, SNP Group  
Project Lead RISE with SAP





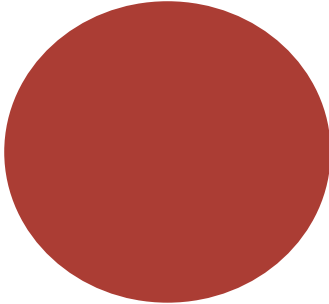


# Interface Discovery vs. Manual Procedure

For a few Dollars  
Quick, complete, efficient

ID Assessment	Project effort
	

  
For „a few more“ Dollars  
Lengthy, incomplete, expensive

Manual Analysis	Project effort
	

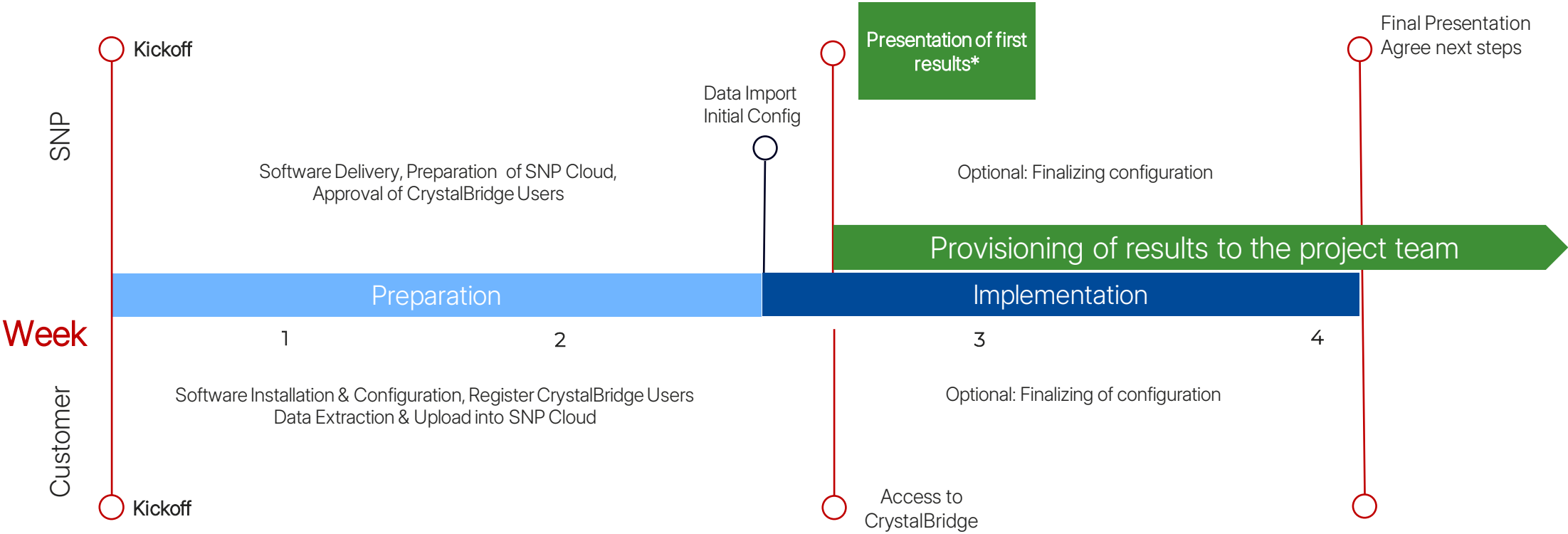
Cost Risk



Subsequent costs due to overlooked Interfaces (up to 1000x)

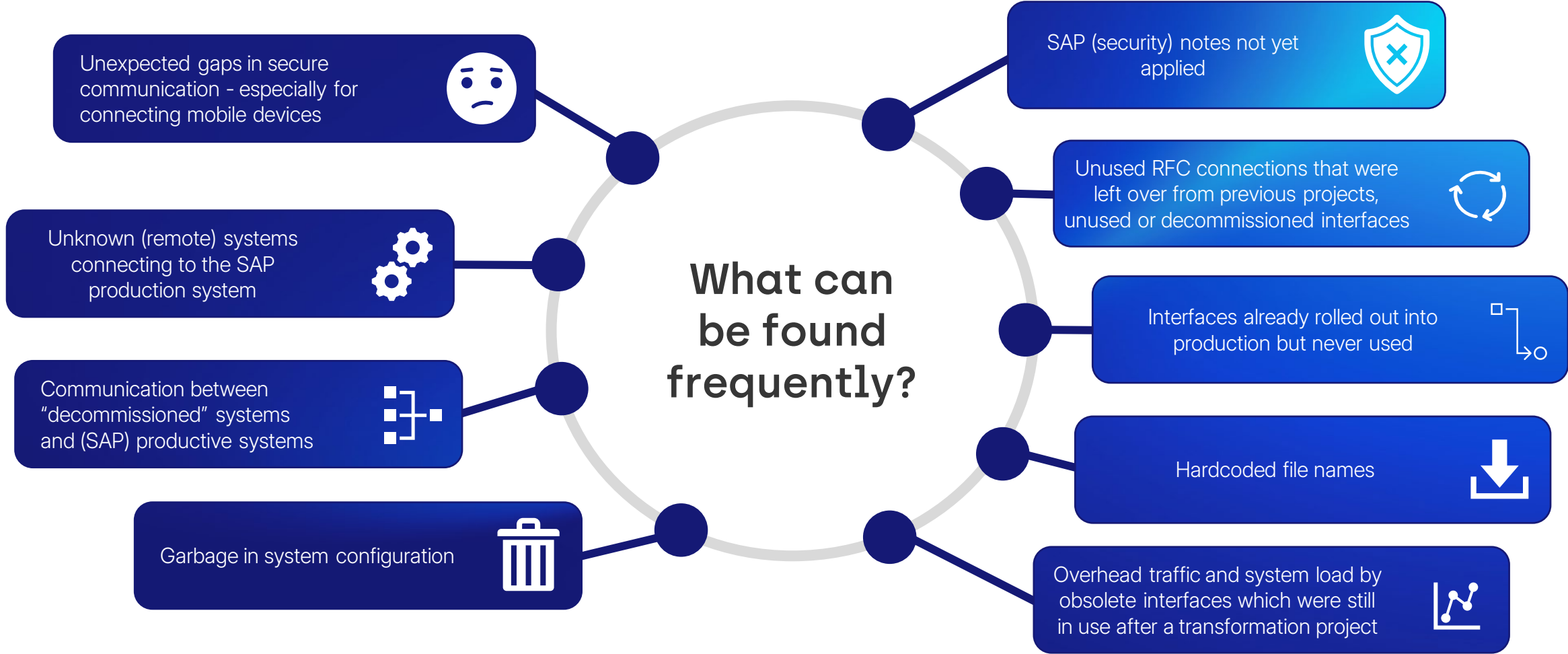
# Typical Assessment Project

- Assessment Scope:
- Analysis period: 2-3 months
  - 1 Analysis system (or more)
  - Optional: File Interfaces, SAP PI/PO



\*in urgent cases: results can be delivered „over night“

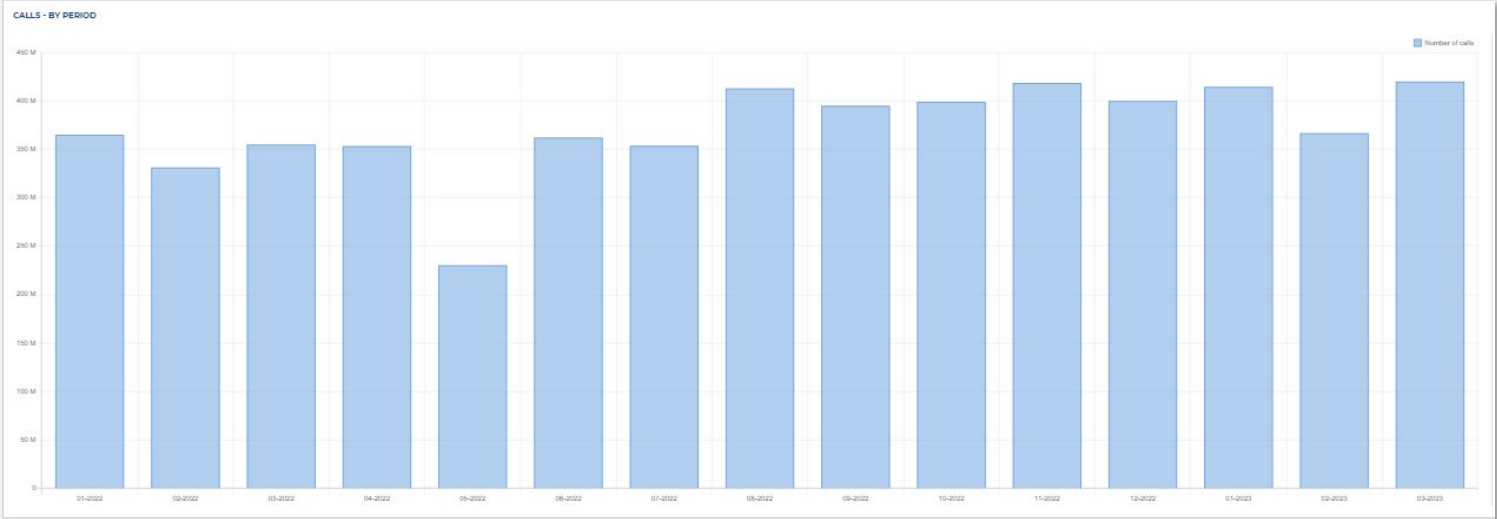
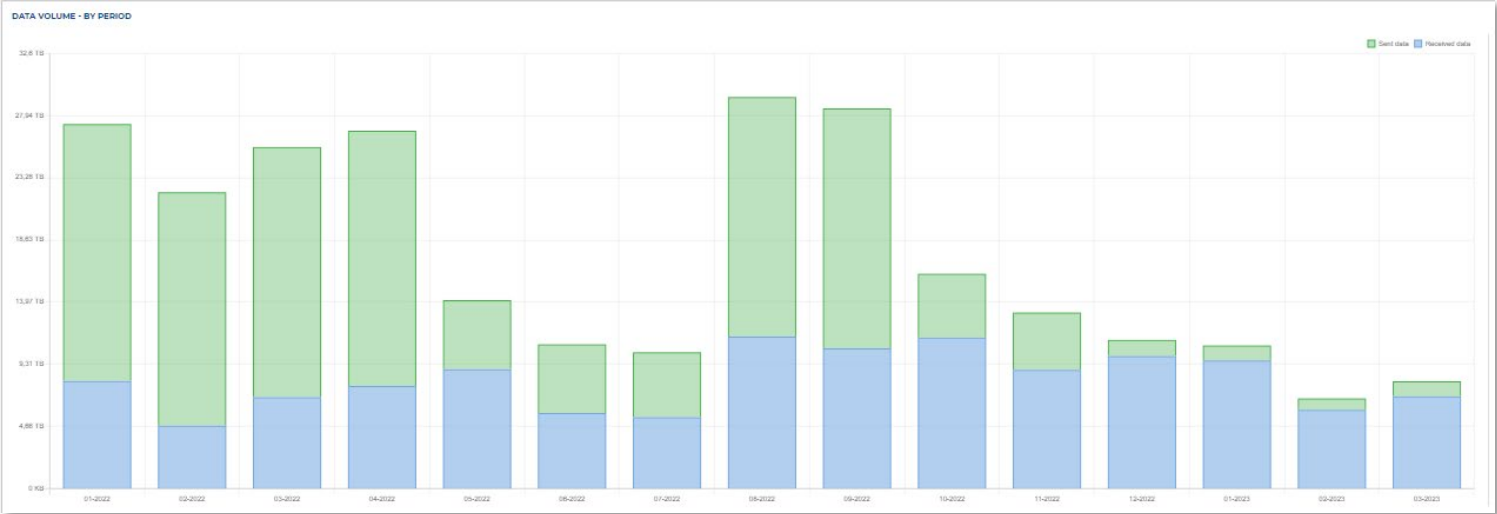
# Interface Discovery – Typical “Findings”







# Interface Analysis Example: Data Volume / Call Statistics

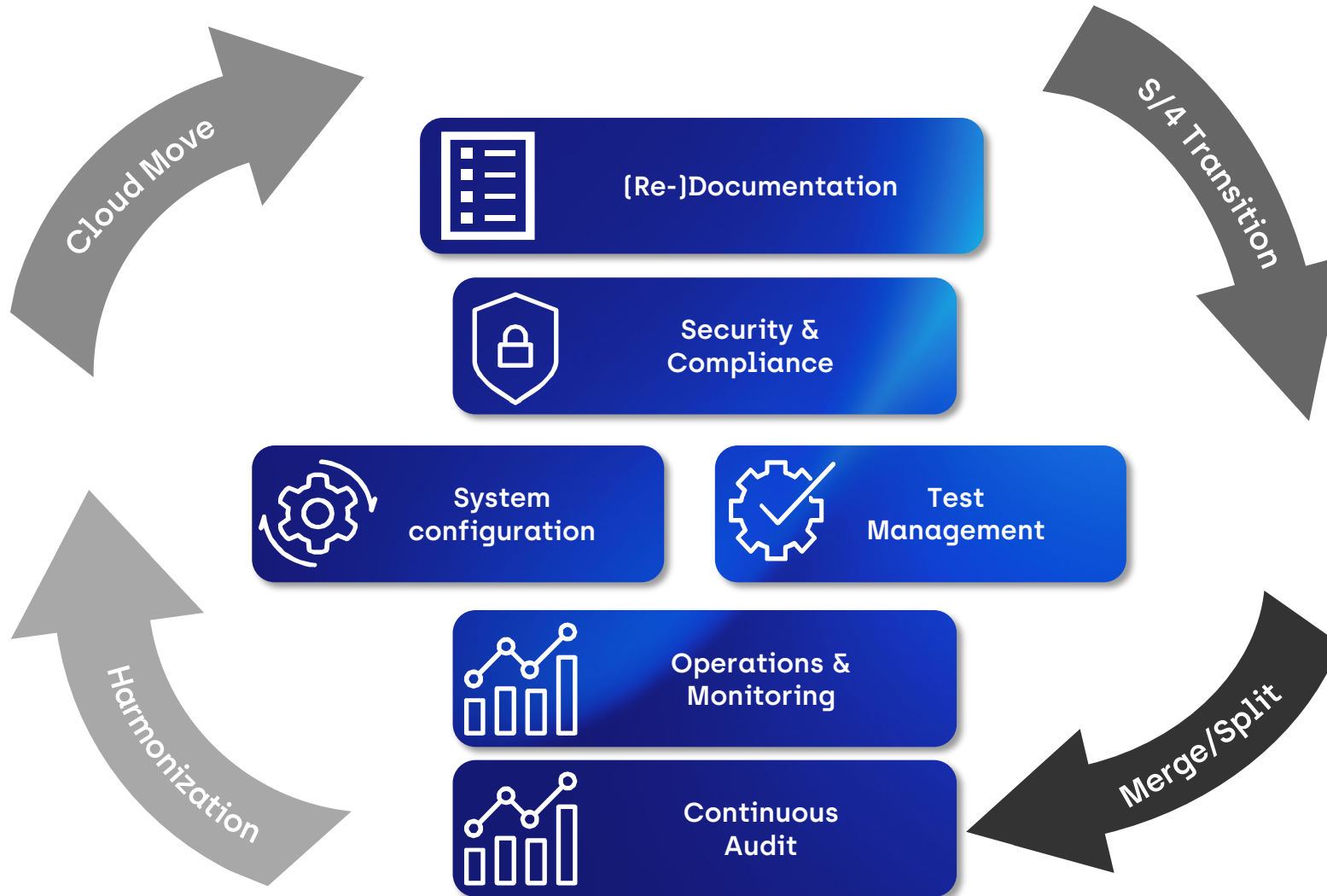


## Scenarios

- Analyze Statistical Data
  - Bandwidth requirements changing?
  - Unusual deviations identified?
  - Implemented optimizations getting effective?
  - Increasing/decreasing or periodic business?
- Infrastructure / Operations Planning
  - Analyze resource requirements

# Use Cases Overview

Support Day-to-day Business and Projects



# Interface Discovery Benefits

## FOR (CLOUD MOVE) PROJECTS

- Discovery of all interfaces of project-relevant systems – in a very short time, if necessary, also shortly before go-live
- Safeguarding: Avoid unpleasant, costly surprises during or after the go-live
- Cost savings: reduce “trial & error” test cycles, support cut-over planning, avoid costly outages after go-live
- Seamless switch to continuous usage

## AS INTEGRAL PART OF INTERFACE MANAGEMENT

- Automated determination of changes in the interface landscape and their use
- Facilitated documentation
- Support Security, Compliance and Audits
- Continuous support in day-to-day business





# Thank you

SNP Schneider-Neureither & Partner SE

Speyerer Strasse 4

69115 Heidelberg

Germany



+49 6221 64 25 – 0



info@snpgroup.com



www.snpgroup.com



linkedin.com/company/snp-schneider-neureither-&-partner-se

# Legal Disclaimer

© 2016-2023 SNP SE or an SNP affiliate company. All rights reserved. No part of this publication may be reproduced or transmitted in any form or for any purpose without the express permission of SNP SE or an SNP affiliate company.

The information contained herein may be changed at any time without notice. Some software products marketed by SNP SE and its distributors contain proprietary software components of other software vendors.

This document is a preliminary version and not subject to your license agreement or any other agreement with SNP. This document contains only intended strategies, developments, and functionalities of the SNP product and is not intended to be binding upon SNP to any particular course of business, product strategy, and/or development.

SNP assumes no responsibility for errors or omissions in this document. SNP does not warrant the accuracy or completeness of the information, text, graphics, links, or other items contained within this material. This document is provided without a warranty of any kind, either express or implied, including but not limited to the implied warranties of merchantability, fitness for a particular purpose, or non-infringement.

SNP shall have no liability for damages of any kind including without limitation direct, special, indirect, or consequential damages that may result from the use of these materials. This limitation shall not apply in cases of intent or gross negligence.

SAP and other SAP products and services mentioned herein as well as their respective logos are trademarks or registered trademarks of SAP SE (or an SAP affiliate company) in Germany and in several other countries.

All other product and service names mentioned are the trademarks of their respective companies.

Heidelberg, Germany 2023